



UC FLOOR

CLASSIQUE WILTON



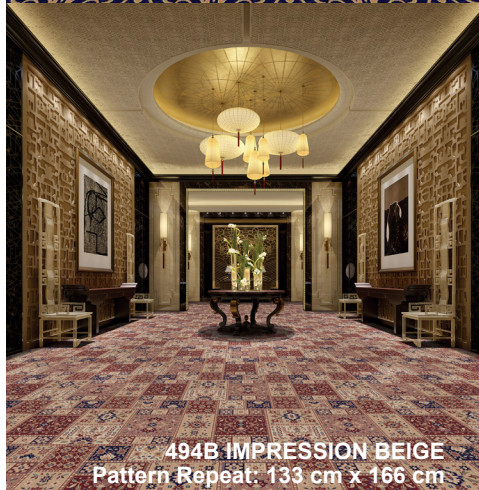
493R TOREADOR RED
Pattern Repeat: 100 cm x 100 cm

CUT PILE PATTERNED

Please note: There may be slight color difference between the picture and actual carpet.



492N SAPPHIRE BLUE
Pattern Repeat: 80 cm x 80 cm



494B IMPRESSION BEIGE
Pattern Repeat: 133 cm x 166 cm



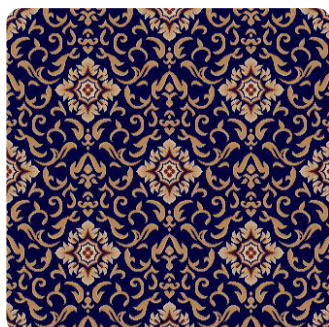
495N SPECTRUM BLUE
Pattern Repeat: 100 cm x 100 cm



495R SPECTRUM RED
Pattern Repeat: 100 cm x 100 cm



496R DIVINE RED
Pattern Repeat: 80 cm x 75 cm



492N SAPPHIRE BLUE



493R TOREADOR RED



494B IMPRESSION BEIGE



495R SPECTRUM RED



495N SPECTRUM BLUE



496R DIVINE RED

CLASSIQUE WILTON Specifications

Construction	Wilton Weave
Yarn Composition	100% Fine Heatset Polypropylene
Yarn Dtex	1600
Pile Weight	Ca. 2100 g/m ² (62 oz/yd ²)
Total Weight	Ca. 2700 g/m ² (80 oz/yd ²)
Pile Height	Ca. 11.5 mm (+/- 0.5 mm)
Total Height	Ca. 13.5 mm (+/- 0.5 mm)
Density	756,000 points/m ²
Standard Roll Size	4 m x 25 m

Performance (as tested by ITTS Inc. USA)

Stain Resistance	10 (AATCC-175-2003)
Static Control	Max. 4 kV (AATCC-134-1996)
Dimensional Stability	Pass - Max. 0.1% change (AACHEN)
Flammability	
Pill Test	Pass - 8 (ASTM-D-2859-06)
Smoke Density	Pass - Max. 450 (ASTM-E-662-06)
Colourfastness	
to light	Good (AATCC-16E)
to wet & dry cleaning	Good (AATCC-165)
to ozone	Excellent - 5 (AATCC-129)

Warranties

10 Year Carpet Wear Warranty
Lifetime Antishock Carpet Warranty

Ideal for Medium Hospitality Use.

The subfloor should be dry, smooth, flat, dust-free and resistant to compression and load-bearing. Where seaming is necessary, a seam sealant **must** be used for all such installations. Due to dye lot variations, actual material may vary slightly from the samples. Chair pads are recommended to prevent premature wear of carpet.

MADE IN TURKEY



Cut



Broadloom

CLASSIQUEWILTON